

Installation of SQL Express 2008 R2 for GFI LanGuard

GFI LanGuard®

Prepared by the Product Management Team at New Boundary Technologies in June 2013 for the launch of GFI LanGuard.

Contact us today!

New Boundary Technologies
3433 Broadway Street N.E., Suite 150
Minneapolis, MN 55413
United States
Phone: 612-379-3805

info@newboundary.com | www.newboundary.com

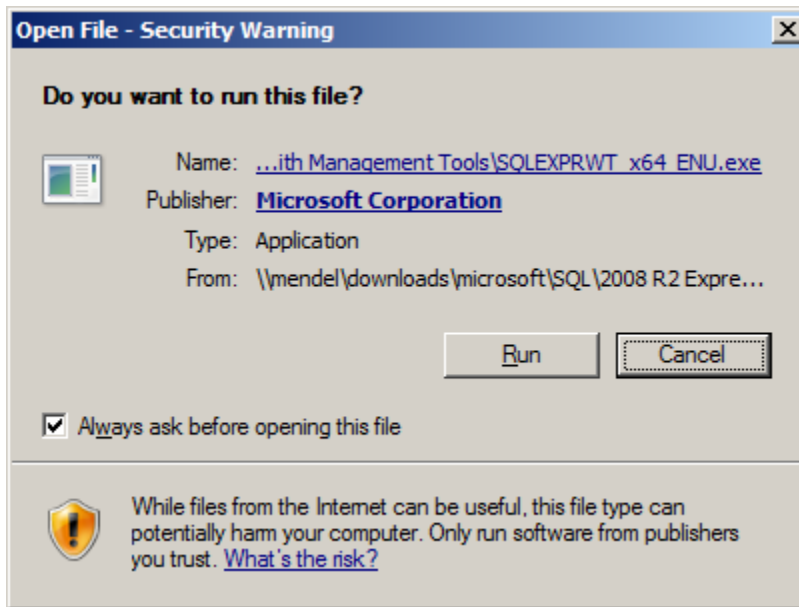


This document covers the recommended installation of SQL Express 2008 R2 as the backend database for GFI LanGuard. These instructions will assist you in installing SQL Express 2008 R2 using SQL authentication account. It will also configure all users that would fall into the Local Administrators group to be Administrators over SQL (SysAdmin). Your organization may have its own requirements for installing and securing SQL or SQL Express; if so, follow those.

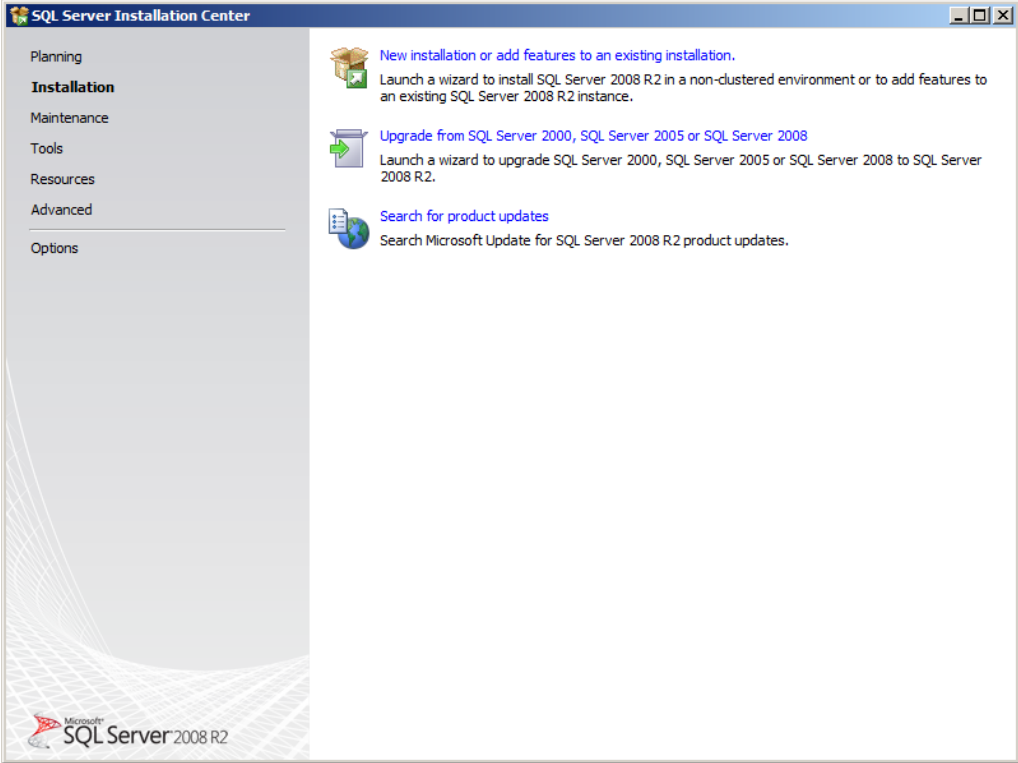
First you'll need to download and install SQL 2008 R2 with Management Tools. Use the link below to download the correct version for your Server, paying attention to 32-bit vs. 64-bit.

<http://www.microsoft.com/en-us/download/details.aspx?id=22985>

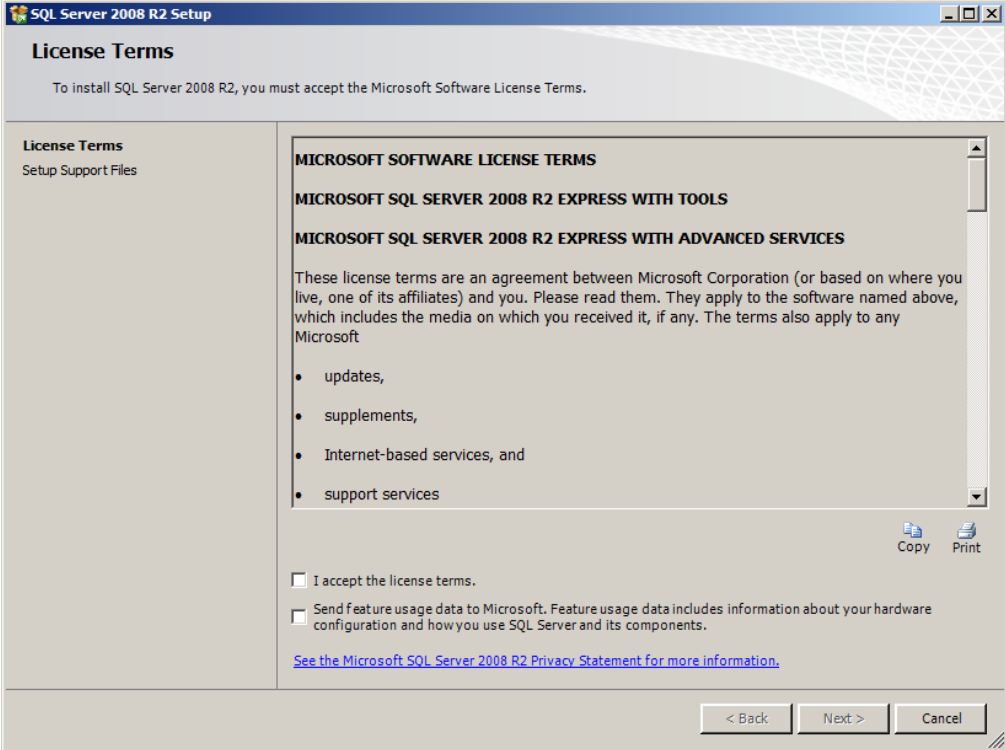
Once you've downloaded the correct version of SQL Express 2008 R2, launch the installer on the server where you plan to install GFI LanGuard. When you launch the installer for SQL Express 2008 R2 you'll see the following screen, choose *Run*.



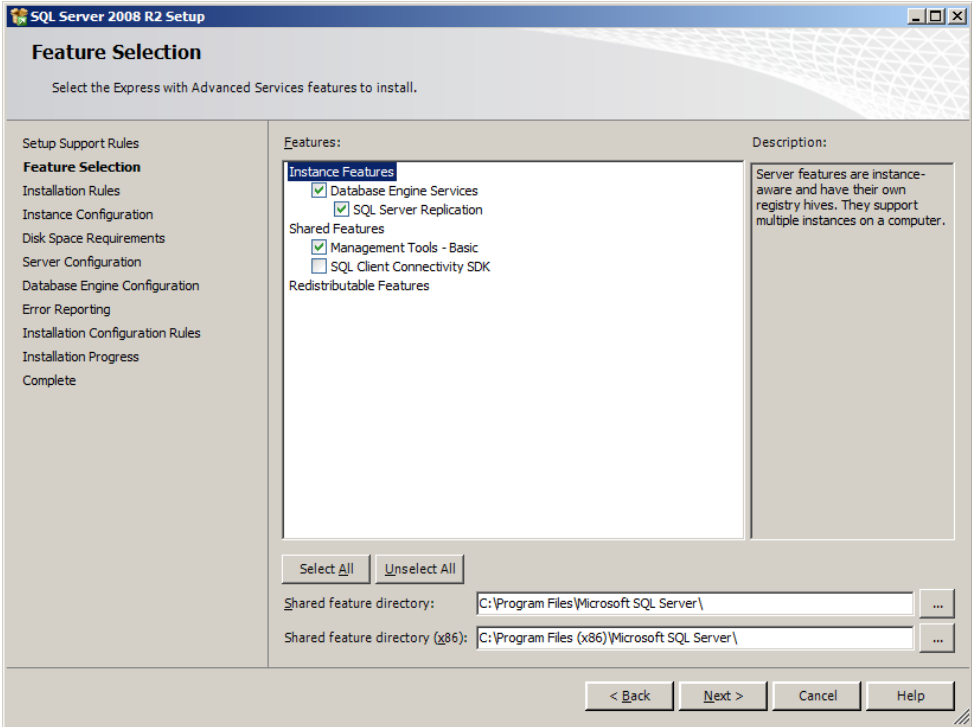
Next you'll see a screen labeled SQL Server Installation Center. Pick the option "New Installation or add features to an existing installation."



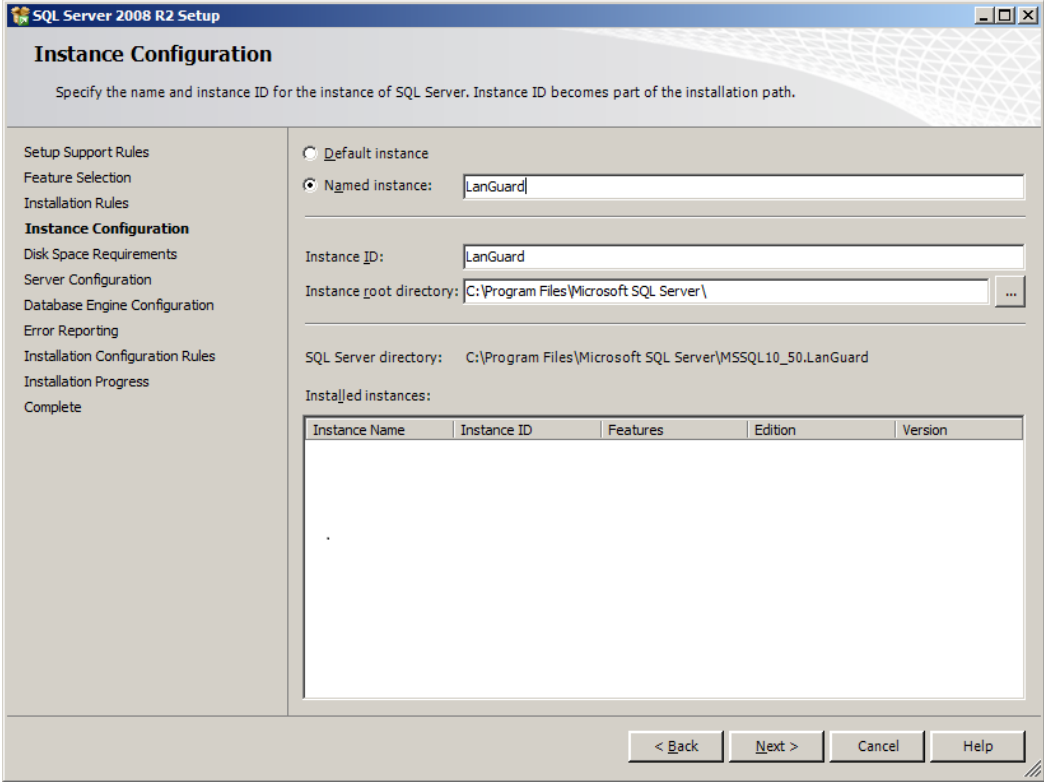
Accept the EULA for Microsoft SQL Express 2008 R2.



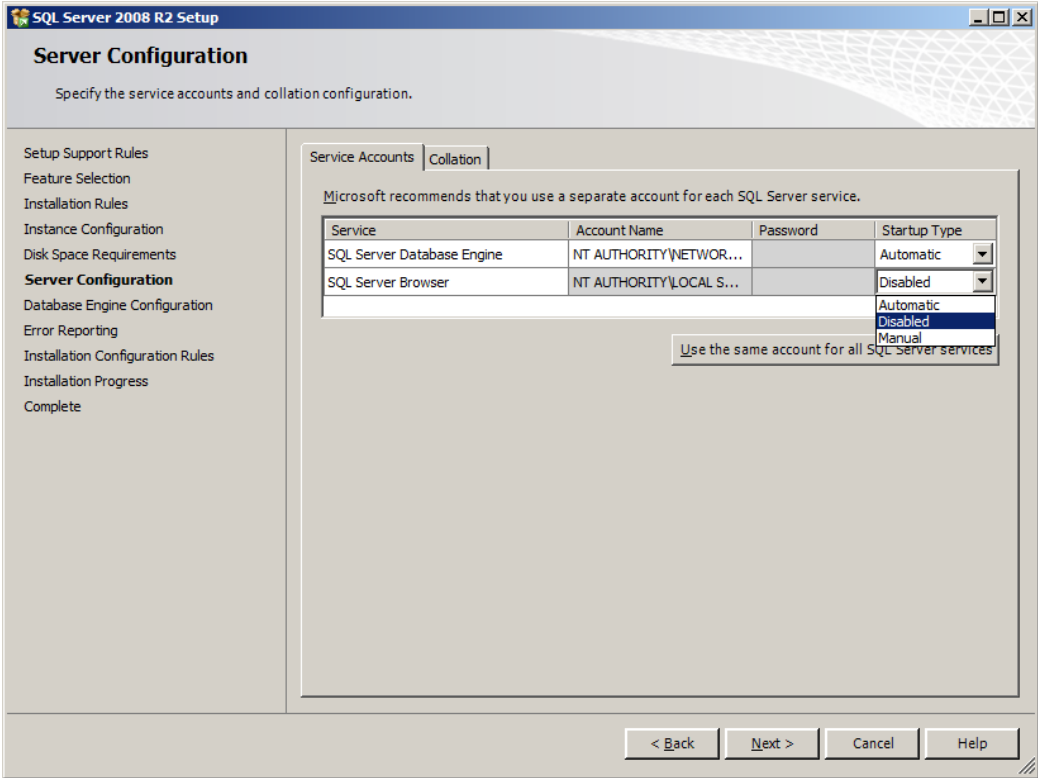
Continuing with the installation, you'll next pick the features to be installed. We've unselected SQL Client Connectivity SDK, and one could probably also unselect SQL Server Replication. You'll also be able to choose the path for SQL on this screen of the install wizard.



In the window titled Instance Configuration, either keep the default of SQL Express or change it to LanGuard or some other appropriate name. We have chosen to create an instance named LanGuard.

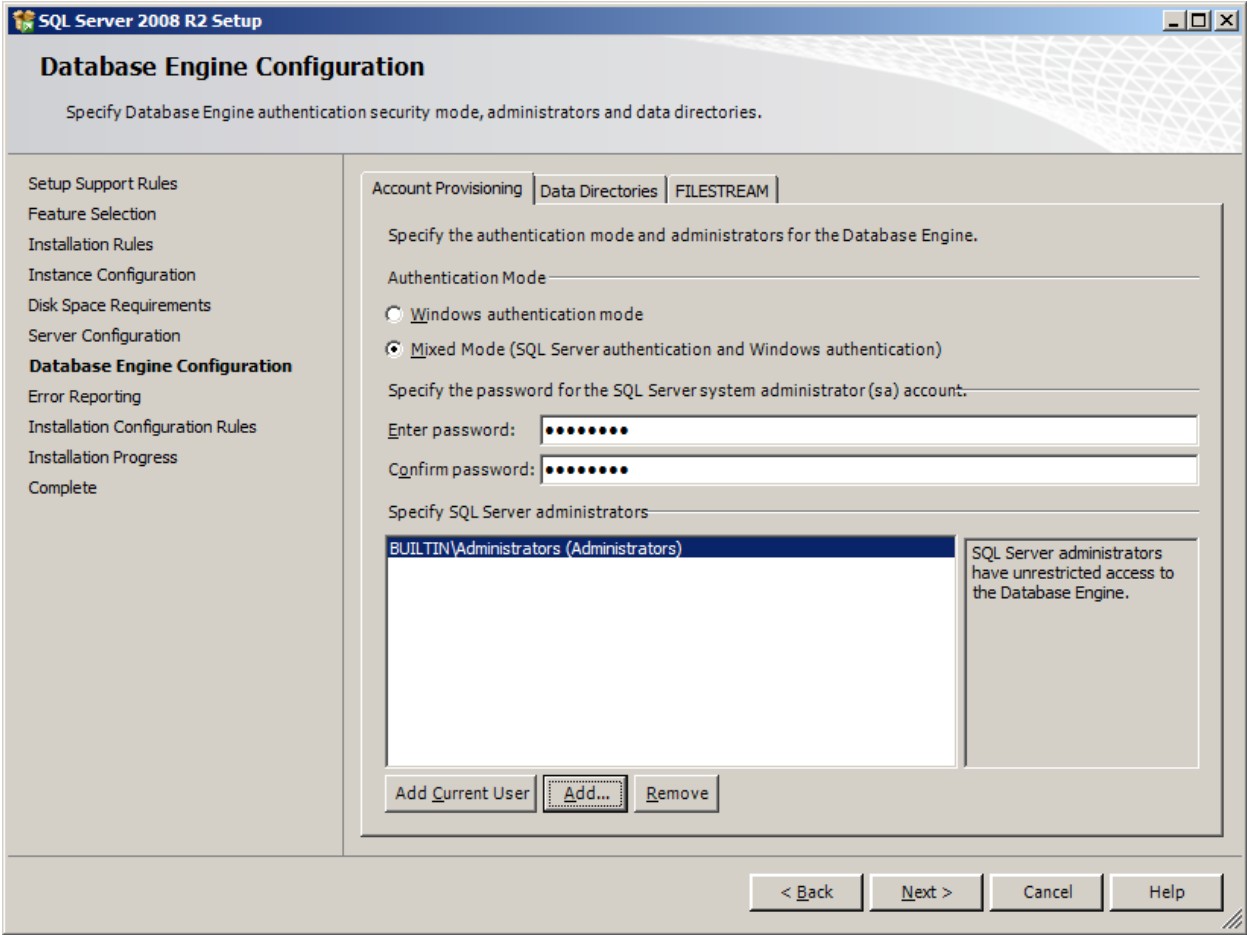


On the Server Configuration window for the SQL Express 2008 R2 installation, enable SQL Server Browser. By default this is not enabled.



On the next screen enable Mixed Mode (SQL Server authentication and Windows authentication). New Boundary Technologies recommends enabling SQL Authentication as the method of connectivity that GFI LanGuard. However, some organizations do not want this enabled; always follow your corporate standards.

We also recommend adding the Local Administrators Group as SQL Server administrators. Again, follow your company policy if it differs from this recommendation.



The rest of the installation is not specific to how SQL Express 2008 R2 will be installed, and we recommend you take the defaults to finish the installation.

If you have questions during the installation, please contact New Boundary Technologies' Technical Support group at 612-379-1851 or support@newboundary.com.